

## FLOOR MOUNT SOLUTIONS



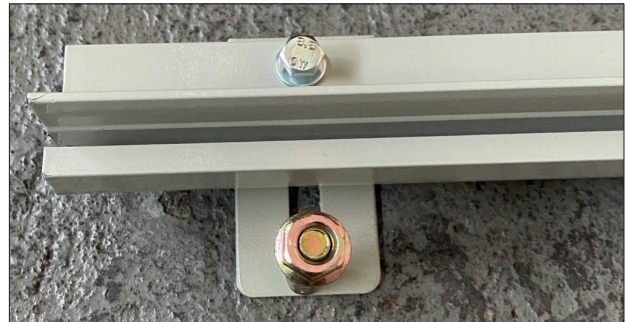
- 1 PLACE THE FLOOR MOUNTING BRACKET ON THE FLOOR



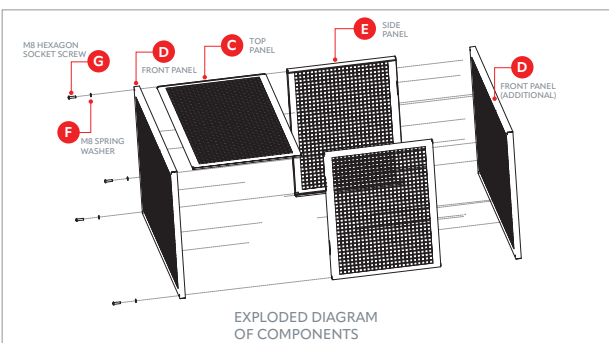
- 2 PLACE THE LOWER PART OF WALL FRAME ON THE MOUNTING BRACKETS (BOTH SIDES)



- 3 BOLT THE LOWER PART OF THE WALL FRAME TO THE FLOOR MOUNTING BRACKET AND BOLT THE FLOOR MOUNTING BRACKET TO THE FLOOR



- 4 SECURE THE FRONT PANEL TO THE LOWER PART OF THE WALL FRAME



## FLOOR MOUNT SOLUTIONS ASHP HEAT GUARD

The DiversiTech International sales team are available to answer your questions or queries on this product. Our experts are waiting for your call +44 (0)115 900 5858 or if you prefer send an email to [sales@diversitech.com](mailto:sales@diversitech.com) or visit [www.diversitech.global](http://www.diversitech.global)